

SCA Society Fees

January 15, 2020

Duane Seelochan

Chair, Strathcona Christian Academy Society

Agenda

- Prayer
- Introduction
- Presentation on Society Fees
 - Mission, Vision, Values
 - History
 - Organization
 - Fees
 - Current work which may impact fees
- Question and Answer
- Conclusion and Next Steps

Wayne Regehr

Executive Pastor, Sherwood Park Alliance Church

Mission, Vision, Values

Mission

**To make disciples of Jesus...to love
God, and to love others.**

Vision

To play a leading role in seeing every person in the Edmonton Metropolitan Region collide with God's Kingdom.

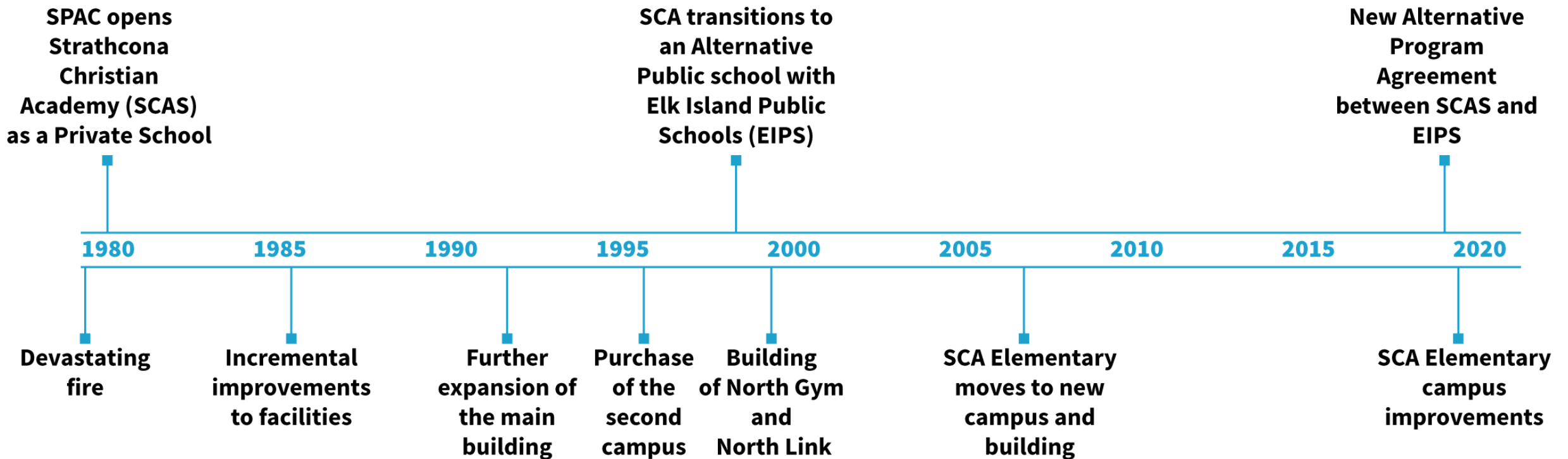
Values

Hospitable - We're committed more than ever to being a Hospitable church where it's possible to belong before you believe.

Transformational - We're serious about being a Transformational church which produces disciples who love and live like Jesus.

Missional - We're passionate about being a Missional church, known for advancing God's Kingdom dream locally and globally.

History



Organization

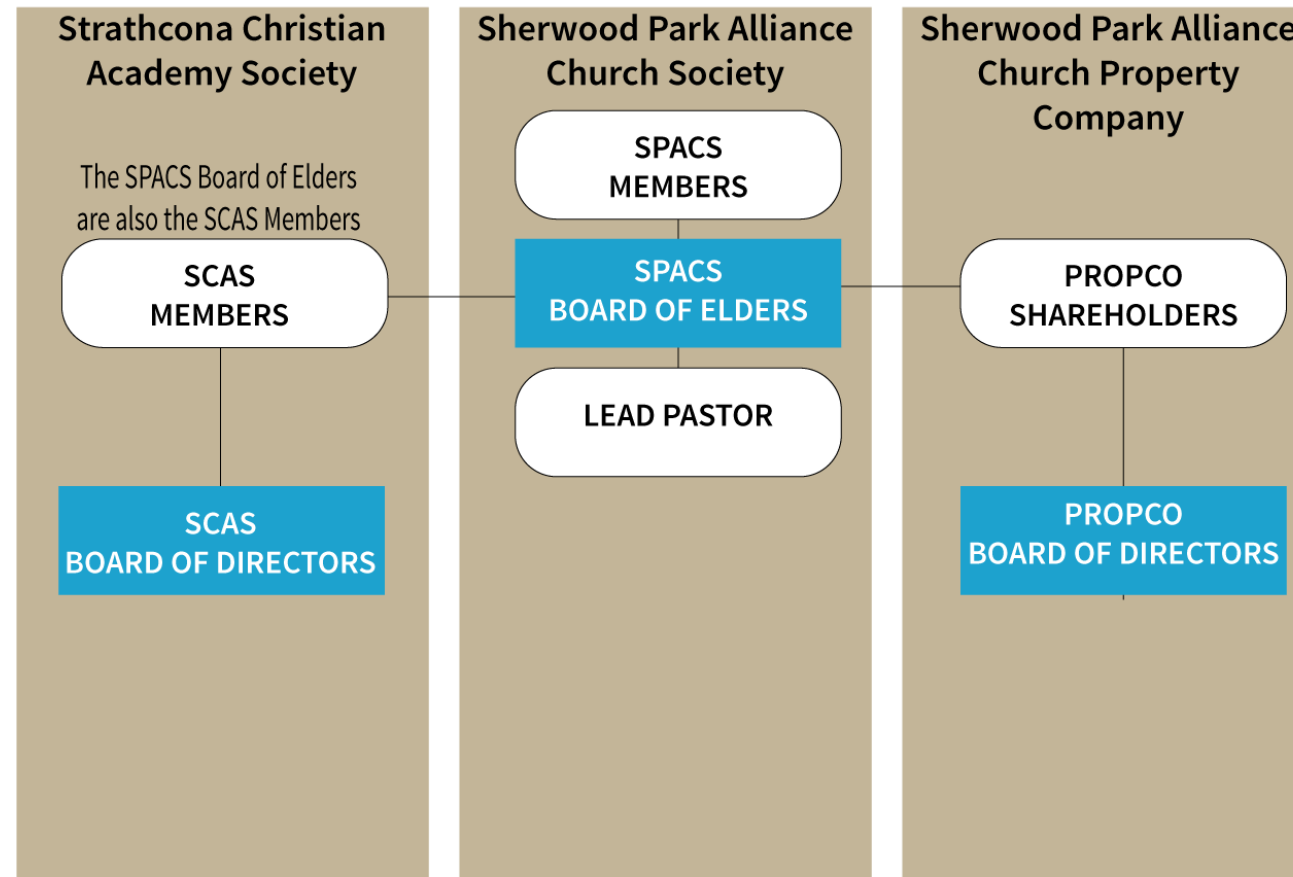
Organization – One Church, Three Entities

Strathcona Christian
Academy Society

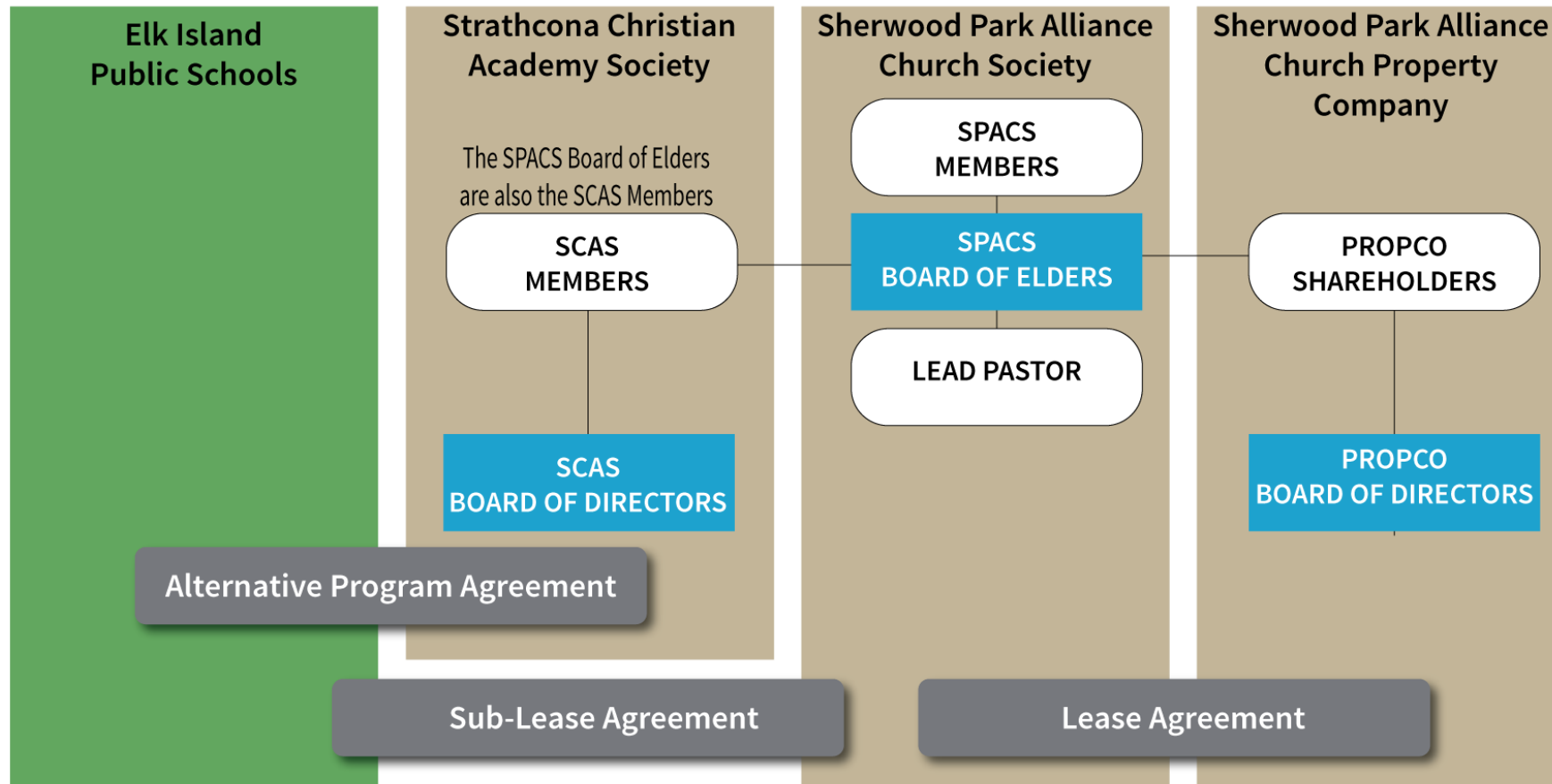
Sherwood Park Alliance
Church Society

Sherwood Park Alliance
Church Property
Company

Organization – Connections



Organization - Agreements

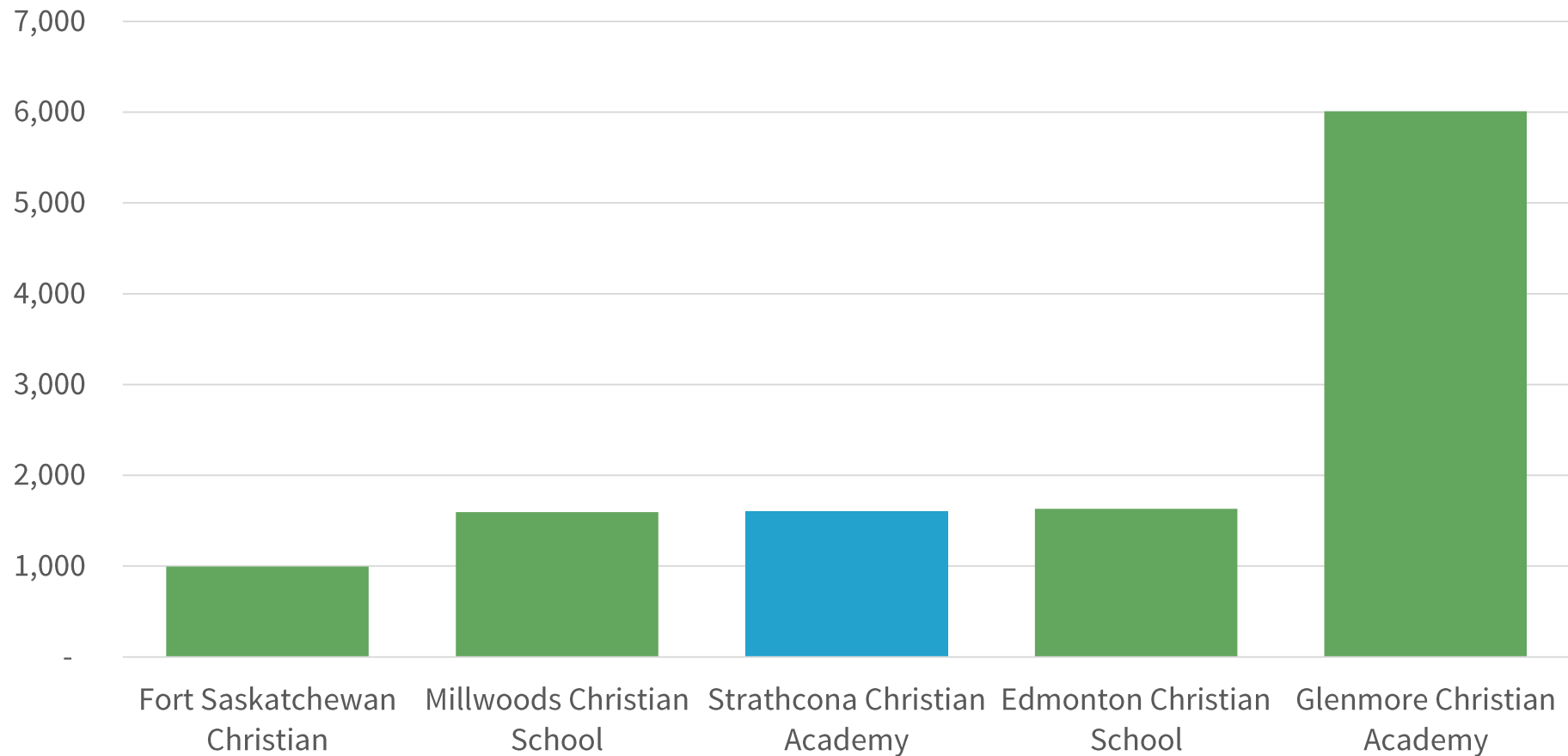


Society Fees

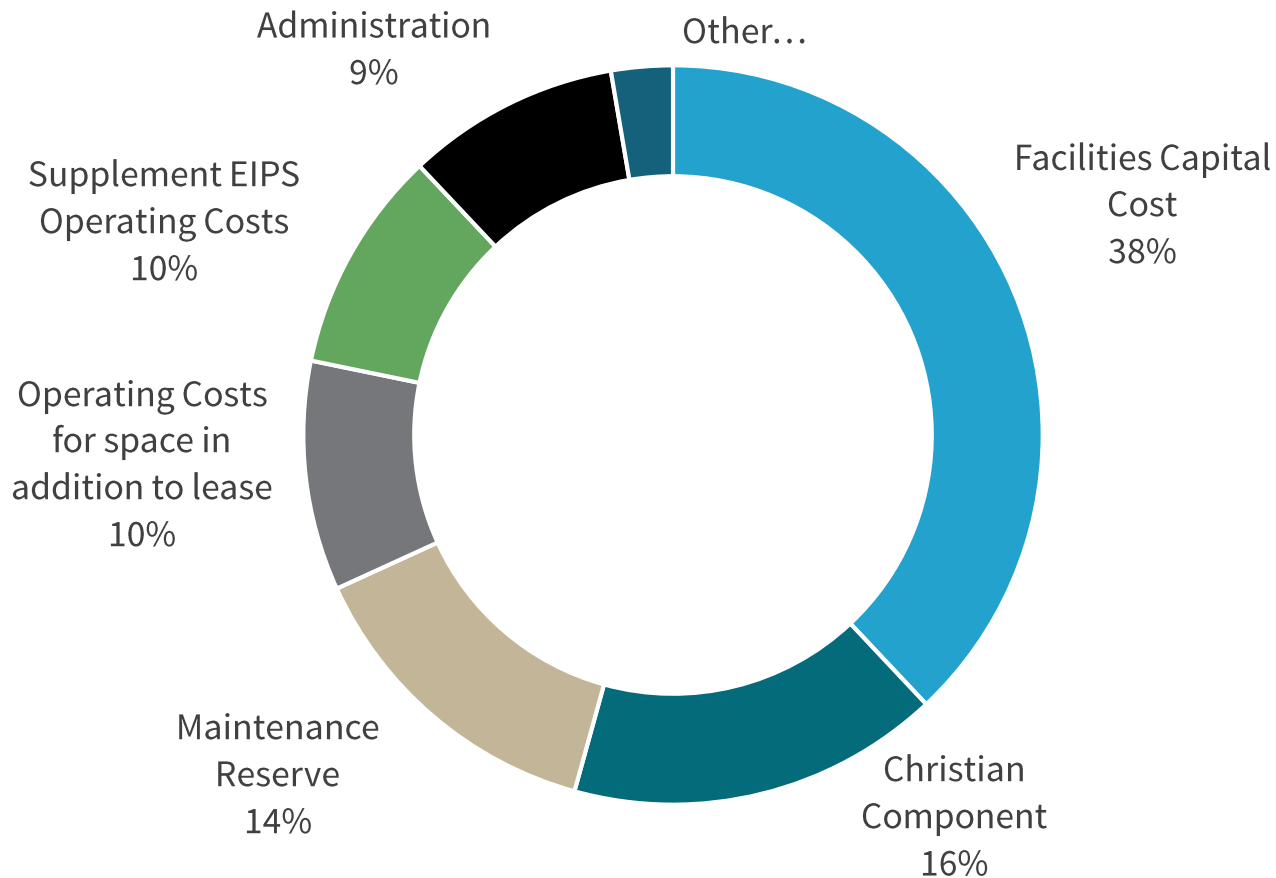
What are my Society Fees in 2019?



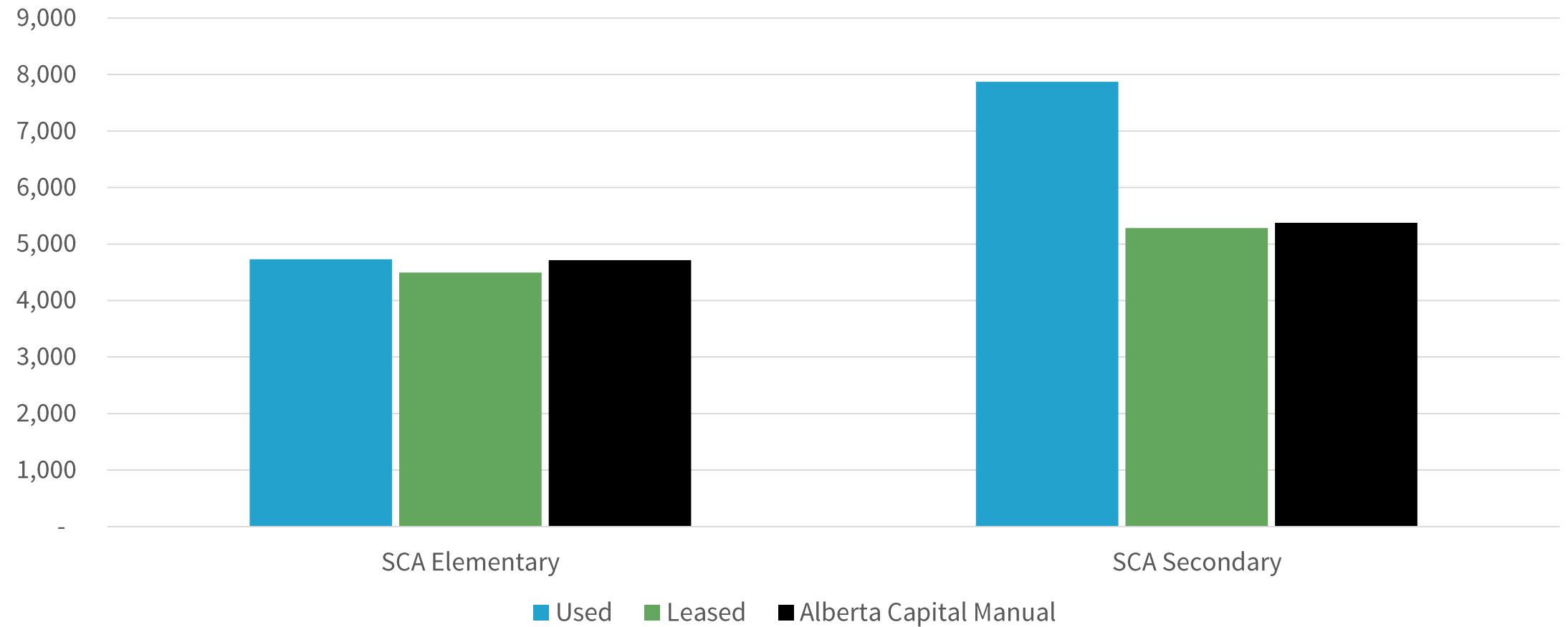
How do my fees compare to others?



Where do the Society Fees go?



Facility Usage



Capital Fee Breakout – 2019

Description	Revenue	Use
Capital Fee from Society Fees	681,000	
Annual Lease for SCE from EIPS	445,920	
Annual Mortgage payment		827,880
Pay down of callable debt		157,292
231 Site improvements		146,407
Totals	1,126,920	1,131,579
Net		(4,659)

Current work which may impact fees

- Lease clarity
 - Presently in discussion with EIPS to clarify lease
- CRA Tax Receipts
 - Engaged with other Christian Schools to settle receipting issue
 - Can we issue tax receipt for all or a portion of society fees?

Question and Answer